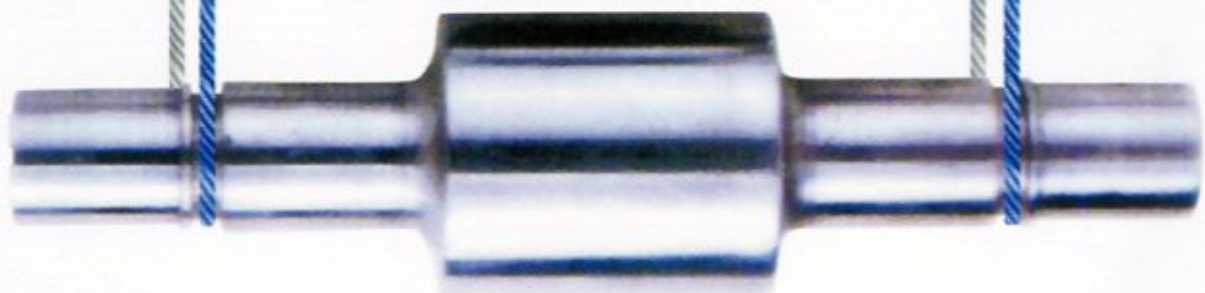


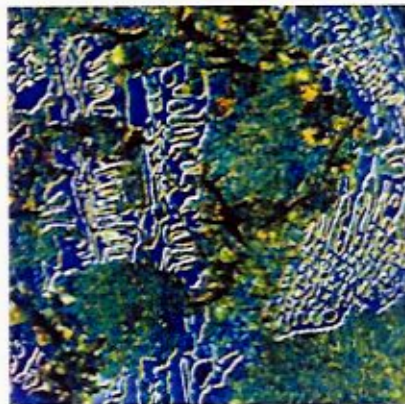
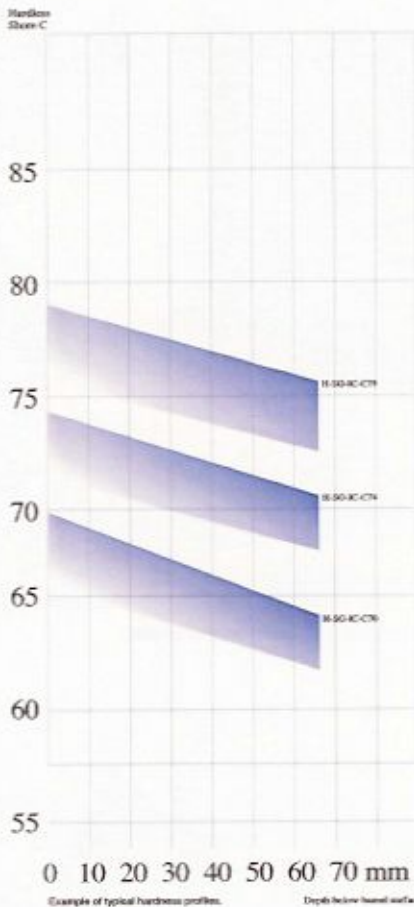
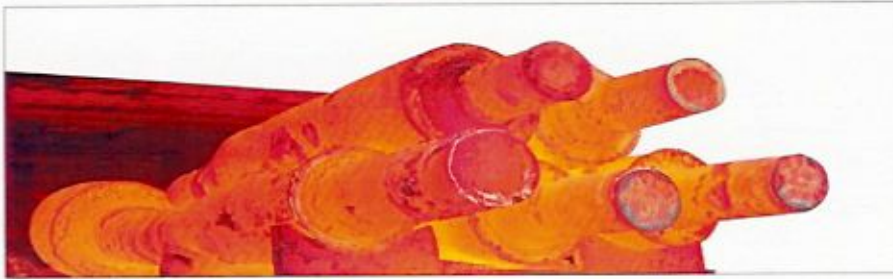
L.M.I ROLLS

Luleh va
Machinsazi Iran Co.

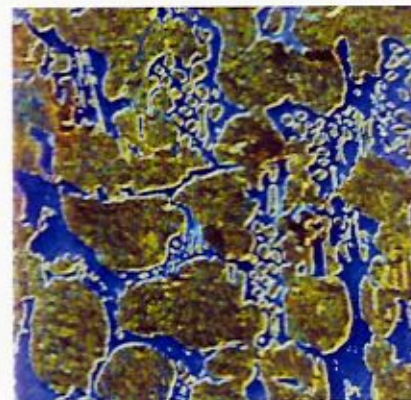


H-IC-C , H-SG-IC-C

Indefinite and Nodular Indefinite Chill
Iron Rolls - Statically Double Poured



*H-IC-C70 . Magnification : 150 x.
Bainitic martensitic matrix with special flake
graphite , carbides and some pearlite.*

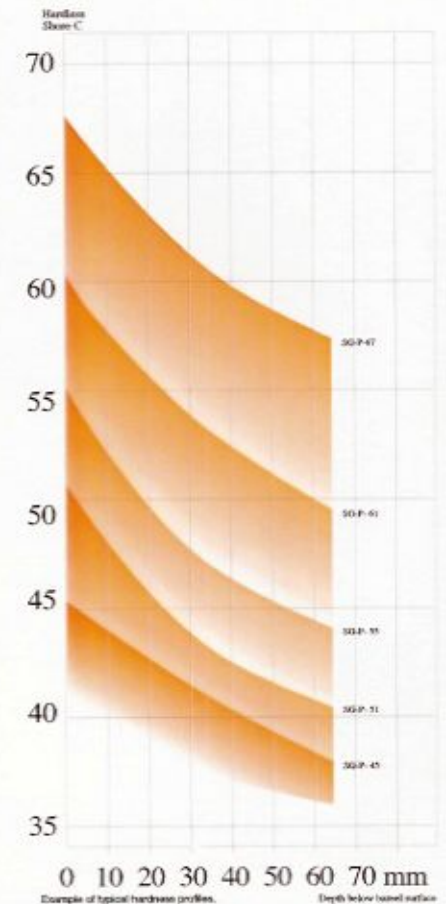


*H-SG-IC-C79 . Magnification : 150 x.
Martensitic - Bainitic matrix with nodular graphite
and carbides .*

Roll grade	Hardness of the shell Shore c
H - IC - C 65	65 ±2
H - IC - C 68	68 ±2
H - IC - C 70	70 ±2
H - IC - C 75	75 ±2
H - IC - C 78	78 ±2
H - SG - IC - C 67	67 ±2
H - SG - IC - C 70	70 ±2
H - SG - IC - C 74	74 ±2
H - SG - IC - C 78	78 ±2

SG-P, H-SG-P

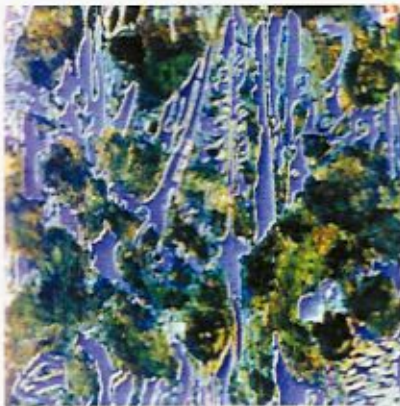
Pearlitic Nodular
Iron Rolls



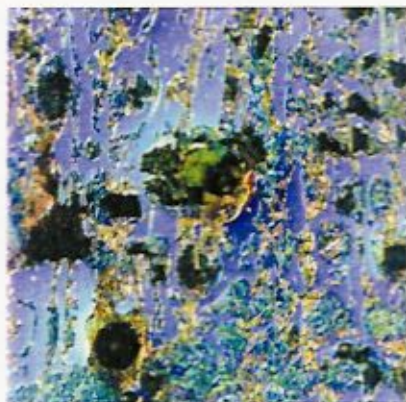
Roll grade	Hardness of the shell Shore c
SG - P - 45	45 ±2
SG - P - 48	48 ±2
SG - P - 51	51 ±2
SG - P - 55	55 ±2
SG - P - 57	57 ±2
SG - P - 61	61 ±2
SG - P - 67	67 ±2
H - SG - P - 57	57 ±2

SG-AC, H-SG-AC

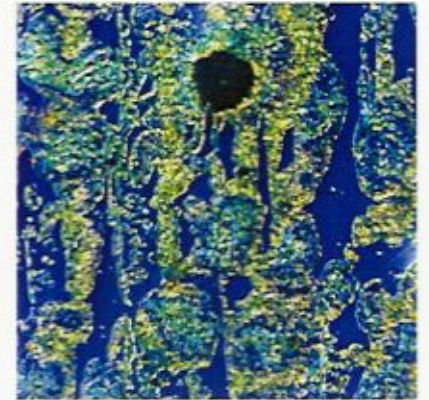
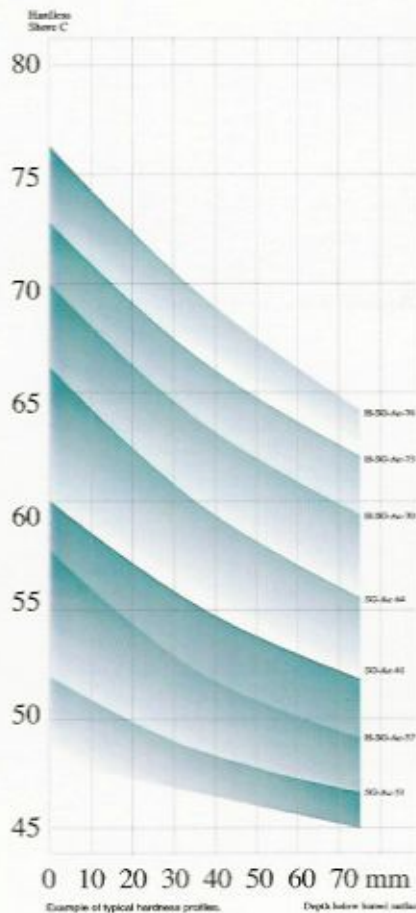
Acicular Nodular
Iron Rolls



SG-P-55 . Magnification : 150 x.
pearlitic matrix with nodular graphite .



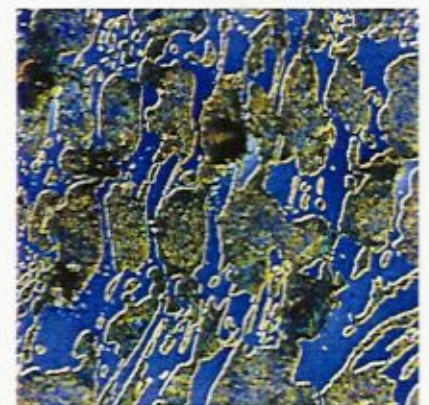
SG-P-64 . Magnification : 150 x.
Bainitic matrix with nodular graphite , carbides
and some pearlite.



SG-Ac-61 . Magnification : 150 x.
Bainitic martensitic matrix with nodular graphite
and carbides .

Roll grade	Hardness of the shell Shore c
SG - AC - 48	48 ± 2
SG - AC - 51	51 ± 2
SG - AC - 55	55 ± 2
SG - AC - 61	61 ± 2
SG - AC - 64	64 ± 2
SG - AC - 67	67 ± 2
SG - AC - 70	70 ± 2
SG - AC - 73	73 ± 2

Roll grade	Hardness of the shell Shore c
H - SG - AC - 48	48 ± 2
H - SG - AC - 51	51 ± 2
H - SG - AC - 55	55 ± 2
H - SG - AC - 61	61 ± 2
H - SG - AC - 64	64 ± 2
H - SG - AC - 67	67 ± 2
H - SG - AC - 70	70 ± 2
H - SG - AC - 73	73 ± 2
H - SG - AC - 76	76 ± 2



H-SG-Ac-70 . Magnification : 150 x.
Bainitic - martensitic matrix with nodular graphite
and carbides .

LULEH VA MACHINSAZI IRAN

(L . M . I)

Km 10 Saveh Road.Tehran - Iran / P.O. Box 33315 - 135 / Tel : + 98 21 524 5052 - 6 / Fax : + 98 21 524 2968

Sale's Tel: + 9821 524 5011 / Fax : + 9821 524 6196

Email:luleh@lmico.com <http://www.lmico.com>

